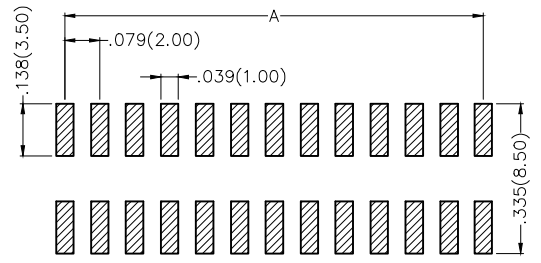
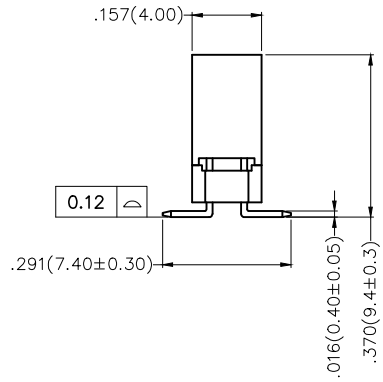
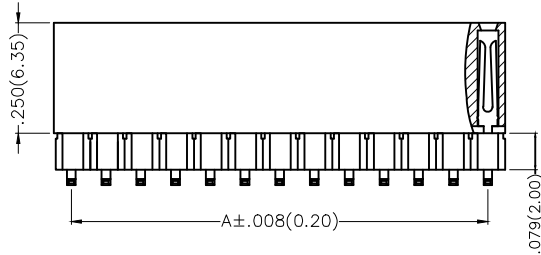
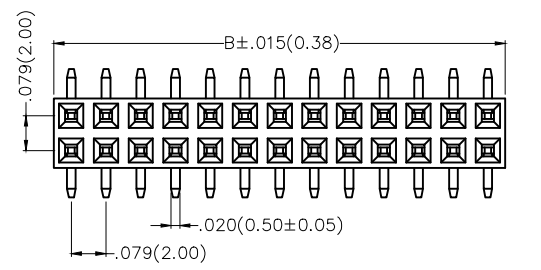


REV	LOCATIONS	DESCRIPTION	DATE	REVISER	APPD

A
B
C
D
E
F



Recommended P.C.Board Layout

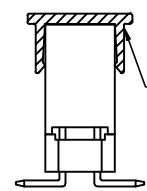
SPECIFICATIONS

Electrical
 Current Rating: 2A AC(rms)/DC
 Voltage Rating: 250V AC(rms)/DC
 Contact Resistance: 20 mΩ Max
 Insulation Resistance: 1000 MΩ Min
 Withstanding Voltage: 500V AC r.m.s
 Temperature Range-Operating: -40°C~+85°C

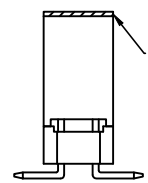
Material and Plating
 Housing: Glass Filled Polyester (UL 94V-0)
 Contact Pin: Brass
 Plating: Gold Plated

Packing: M-Reel(With Cap)

Packing: M1-Reel(With Mylar)



SMT Clamping Buckle



SMT Mylar

Ordering Information

FFH 200 45 - D XX S X XX 4 BK X
 1 2 3 4 5 6 7 8 9 10 11



1	Category FFH-Female Header	2	Series Number 200-Pitch2.00mm	3	Distinction No. 45	4	Row Option D-Double Row	5	Circuits XX	6	Entry Angle S-180° Vertical
7	Plating 1-Gold Plated	8	Thickness of Plating 00-Gold Flash 05-5μ" Custom plate available	9	Material-Resin 4-PA6T	10	Color-Resin BK-Black	11	Packaging M-Reel(With Cap) M1-Reel(With Mylar)		

 THIRD ANGLE PROJECTION	GENERAL TOLERANCES (UNLESS SPECIFIED)		APPROVE BY FRANK	DATE 19/SEP/22	PART NO. FFH20045-DXXSXXX4BKX	ITEM NO. FFH20045	 Leader Of Industry
	X.±.012(0.30)	X.±5'	CHECKED BY CHERRY	DATE 19/SEP/22	TITLE Board to Board (Female Header) Pitch 2mm 180° Vertical (SMT)		
DESIGN UNITS Inch (metric)	X.X±.008(0.20)	.X'±2'	DRAWN BY MATT	DATE 19/SEP/22	THIS DRAWING CONTAINS INFORMATION THAT IS PROPRIETARY TO TXGA INDUSTRIAL ELECTRONICS(S.Z)CO.,LTD AND SHOULD NOT BE USED WITHOUT WRITTEN PERMISSION		
SCALE 5:1	SIZE A4	X.XX±.006(0.15)					
		X.XXX±.004(0.10)					

1 2 3 4 5 6 7 8

REV	LOCATIONS	DESCRIPTION	DATE	REVISER	APPD

Circuits (n)	Part No.	Dimensions(in/mm)		Circuits (n)	Part No.	Dimensions(in/mm)	
		A	B			A	B
4	FFH20045-D04SXXX4BKX	.079(2.00)	.177(4.50)	44	FFH20045-D44SXXX4BKX	1.654(42.00)	1.752(44.50)
6	FFH20045-D06SXXX4BKX	.157(4.00)	.256(6.50)	46	FFH20045-D46SXXX4BKX	1.732(44.00)	1.831(46.50)
8	FFH20045-D08SXXX4BKX	.236(6.00)	.335(8.50)	48	FFH20045-D48SXXX4BKX	1.811(46.00)	1.909(48.50)
10	FFH20045-D10SXXX4BKX	.315(8.00)	.413(10.50)	50	FFH20045-D50SXXX4BKX	1.890(48.00)	1.988(50.50)
12	FFH20045-D12SXXX4BKX	.394(10.00)	.492(12.50)	52	FFH20045-D52SXXX4BKX	1.969(50.00)	2.067(52.50)
14	FFH20045-D14SXXX4BKX	.472(12.00)	.571(14.50)	54	FFH20045-D54SXXX4BKX	2.047(52.00)	2.146(54.50)
16	FFH20045-D16SXXX4BKX	.551(14.00)	.650(16.50)	56	FFH20045-D56SXXX4BKX	2.126(54.00)	2.224(56.50)
18	FFH20045-D18SXXX4BKX	.630(16.00)	.728(18.50)	58	FFH20045-D58SXXX4BKX	2.205(56.00)	2.303(58.50)
20	FFH20045-D20SXXX4BKX	.709(18.00)	.807(20.50)	60	FFH20045-D60SXXX4BKX	2.283(58.00)	2.382(60.50)
22	FFH20045-D22SXXX4BKX	.787(20.00)	.886(22.50)	62	FFH20045-D62SXXX4BKX	2.362(60.00)	2.460(62.50)
24	FFH20045-D24SXXX4BKX	.866(22.00)	.965(24.50)	64	FFH20045-D64SXXX4BKX	2.441(62.00)	2.539(64.50)
26	FFH20045-D26SXXX4BKX	.845(24.00)	1.043(26.50)	66	FFH20045-D66SXXX4BKX	2.520(64.00)	2.618(66.50)
28	FFH20045-D28SXXX4BKX	1.024(26.00)	1.122(28.50)	68	FFH20045-D68SXXX4BKX	2.598(66.00)	2.697(68.50)
30	FFH20045-D30SXXX4BKX	1.102(28.00)	1.201(30.50)	70	FFH20045-D70SXXX4BKX	2.677(68.00)	2.776(70.50)
32	FFH20045-D32SXXX4BKX	1.181(30.00)	1.280(32.50)	72	FFH20045-D72SXXX4BKX	2.756(70.00)	2.854(72.50)
34	FFH20045-D34SXXX4BKX	1.260(32.00)	1.358(34.50)	74	FFH20045-D74SXXX4BKX	2.835(72.00)	2.933(74.50)
36	FFH20045-D36SXXX4BKX	1.339(34.00)	1.437(36.50)	76	FFH20045-D76SXXX4BKX	2.913(74.00)	3.012(76.50)
38	FFH20045-D38SXXX4BKX	1.417(36.00)	1.516(38.50)	78	FFH20045-D78SXXX4BKX	2.992(76.00)	3.091(78.50)
40	FFH20045-D40SXXX4BKX	1.496(38.00)	1.594(40.50)	80	FFH20045-D80SXXX4BKX	3.071(78.00)	3.169(80.50)
42	FFH20045-D42SXXX4BKX	1.575(40.00)	1.673(42.50)				

 THIRD ANGLE PROJECTION	GENERAL TOLERANCES (UNLESS SPECIFIED)		APPROVE BY FRANK	DATE 19/SEP/22	PART NO. FFH20045-DXXSXXX4BKX	ITEM NO. FFH20045	 Leader Of Industry		
	X.±.012(0.30)	X.±5'	CHECKED BY CHERRY	DATE 19/SEP/22	TITLE Board to Board (Female Header) Pitch 2mm 180° Vertical (SMT)			REV 0	SHEET NO. 2/2
	X.X±.008(0.20)	.X'±2'	DRAWN BY MATT	DATE 19/SEP/22	THIS DRAWING CONTAINS INFORMATION THAT IS PROPRIETARY TO TXGA INDUSTRIAL ELECTRONICS(S.Z)CO.,LTD AND SHOULD NOT BE USED WITHOUT WRITTEN PERMISSION				
	X.XX±.006(0.15)	.XX'±1'							
SCALE 5:1	SIZE A4	X.XXX±.004(0.10)	.XXX'±0.5'						